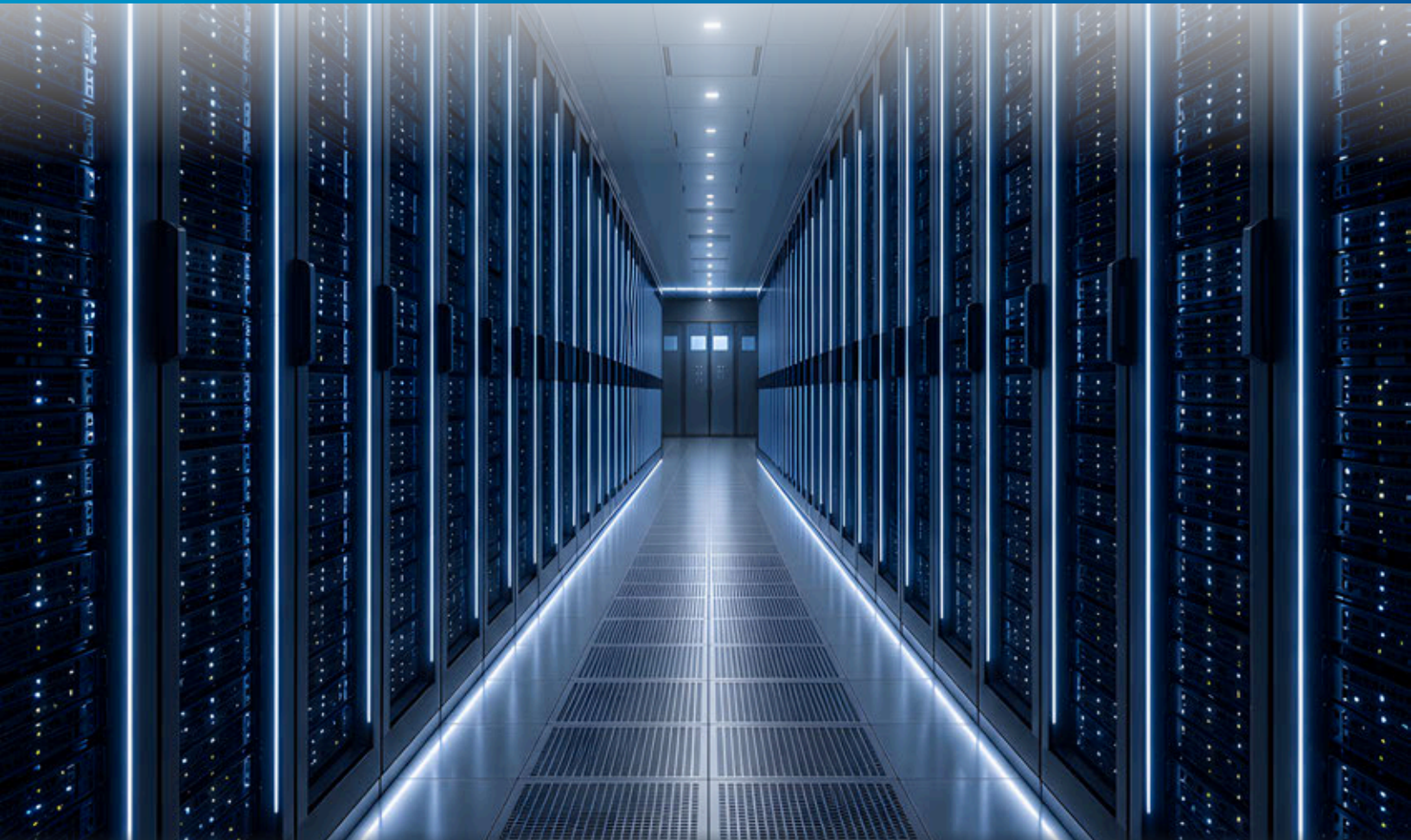


# Amphenol Sensors

SENSOR PORTFOLIO

# Data Center


*Sensors for the AI-era data center.*



AIR COOLING ◆ LIQUID COOLING ◆ POWER ◆ SERVER ◆ RACK ◆ GENERATORS ◆ BESS

# Across Your Facility

Seven infrastructure zones. Every measurement that matters.




### Air Cooling

*CRAH/CRAC · supply/return air · cold/hot aisle containment*

🕒 🌡️ 💧 🌀 🔄

Airflow balance, condensation prevention, demand-controlled ventilation, and refrigerant-leak detection — every air-side measurement that matters.

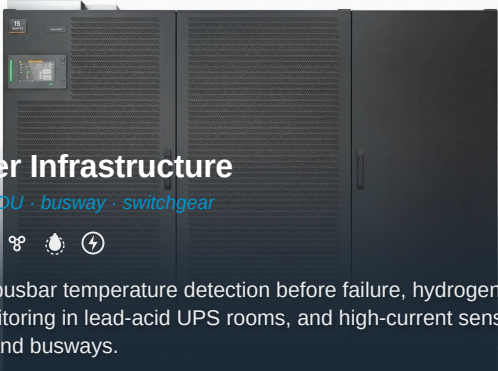


### Liquid Cooling

*CDUs · coolant loops · immersion · reservoirs*

🕒 🌡️ 💧 🔥 📄

Coolant pressure under variable IT load, leak detection before propagation, reservoir level for make-up planning, and glycol chemistry in closed loops.



### Power Infrastructure

*UPS · PDU · busway · switchgear*

🕒 🌡️ 🌀 🔥 ⚡

Rising busbar temperature detection before failure, hydrogen build-up monitoring in lead-acid UPS rooms, and high-current sensing on PDUs and busways.



### Server Board-Level

*Server PCBs · CDU control boards · chassis-level integration*

🕒 💧 🌡️

Compact pressure, humidity, and temperature sensing for server chassis and CDU board electronics.



### Rack Infrastructure

*Rack-mounted environmental and condition monitoring*

🕒 🌡️ 💧 🌀 🔥 📄

Rack-level environmental probes, water-ingress detection at the rack, and predictive vibration monitoring on fans and pumps.




### Generators

*Backup gensets · fuel tanks · intake/exhaust paths*

🕒 🌡️ 📄 🔥

Combustion-control temperature on intake and exhaust, fuel-tank level for both day-tank and bulk yard, and water-in-fuel detection.



### BESS / Li-ion UPS

*Battery energy storage · Li-ion UPS*

🕒 🌡️ 💧 🌀 🔥 ⚡

Off-gas detection (CO<sub>2</sub>, H<sub>2</sub>), IR cell-temperature monitoring, and high-current DC sensing for thermal-runaway prevention.

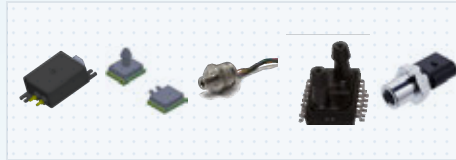
### One Portfolio. Every Zone.

From the chiller plant to the chip — Amphenol Sensors covers every measurement that matters in the AI data center, with the specialty sensor brands engineers across the industry already specify.

PRESSURE & AIRFLOW	TEMPERATURE	HUMIDITY		
GAS	LEAK	LEVEL	VIBRATION	CURRENT

# Our Sensor Portfolio

Every modality, backed by Amphenol's specialty sensor brands.



## Pressure, $\Delta P$ & Airflow

Transmitters · transducers · board-mount ·  $\Delta P$  cells · MEMS air-velocity (coming soon)

Piezoresistive (silicon, stainless-steel isolated) · Leadless dual-die · CoBeam2 · MEMS · MEMS thermal mass flow

0.5" H<sub>2</sub>O – 35 bar + air velocity sensing

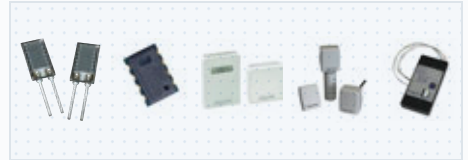


## Temperature

Probes · pipe-clip · ring-terminal · self-adhering · IR

NTC thermistor · RTD · IR thermopile (non-contact)

-50 °C to +1100 °C, board to industrial

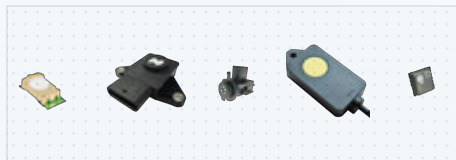


## Humidity

Modules · SIP packages · transmitters · harsh-environment

Capacitive polymer · Resistive polymer

0–100% RH with dew-point / enthalpy / wet-bulb outputs



## Gas Detection

NDIR modules · electrochemical sensors · catalytic bead

NDIR (CO<sub>2</sub>, R290 propane, R32 refrigerant) · Electrochemical (H<sub>2</sub>)

Refrigerant leaks, battery off-gas, and indoor air quality



## Leak Detection

Rope-leak cables (coming soon) · spot-water detectors

TDR distributed rope-leak · Spot-water · Capacitive

Distributed pipe-run tracing or single-point detection



## Level

Float switches · guided-wave radar · ultrasonic · tank monitors

Float · Ultrasonic · Guided-wave radar · Capacitive

Tank, reservoir, and process vessel level

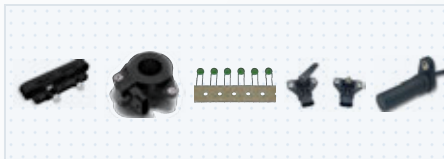


## Vibration

Industrial accelerometers · wireless vibration monitors

Piezoelectric · Wireless

Predictive maintenance for mechanical infrastructure



## Current, Position & Speed

Hall-effect · current limiters · position · speed

Hall effect · PTC · Inductive

AC/DC current, busbar, position & speed

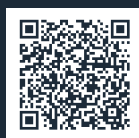


## Site & Outdoor Conditions

Multi-parameter outdoor environmental weather station — ultrasonic, no moving parts

Ultrasonic anemometry · Solid-state T+RH · MEMS barometric · Acoustic rain · IPX6 housing

Hyperscale site BMS · Co-location facility teams · Generator OEMs · Cooling-system integrators



EXPLORE THE FULL PORTFOLIO

Every data center sensor, every modality.

[amphenolsensors.com/markets/data-center](https://amphenolsensors.com/markets/data-center)

SCAN



# Amphenol Sensors

## FROM FACILITY TO BOARD

From facility infrastructure to board-level integration, Amphenol Sensors delivers the measurement coverage the **AI era** demands.

*Explore the full data center sensor portfolio.*



SCAN TO EXPLORE

[amphenolsensors.com/  
markets/data-center](https://amphenolsensors.com/markets/data-center)

## THE AMPHENOL SENSORS BRAND FAMILY

 ACCUMETRICS

 AIRMAR<sup>®</sup>  
TECHNOLOGY CORPORATION

 ALL  
SENSORS<sup>®</sup>  
AN INTERTEC COMPANY

 ENDEVCO

 EXAT THERMOMETRICS

 i2s

 IMI SENSORS

 KAYE

 LARSON DAVIS

 LID  
TECHNOLOGIES

 MARPORT

 THE MODAL SHOP

 MSI<sup>®</sup>  
TRANSDUCERS

 NOVA<sup>®</sup>  
SENSOR

 PCB  
PIEZOTRONICS

 Piezo  
Technologies™

 PIHER *sensing  
systems*

 PROTIMETER

 Rochester  
Sensors.

 SGX  
SENSORTECH

 SSI Technologies, LLC

 TELAIRE<sup>®</sup>

 Temposonics

 THERMOMETRICS

 Wilcoxon  
SENSING TECHNOLOGIES