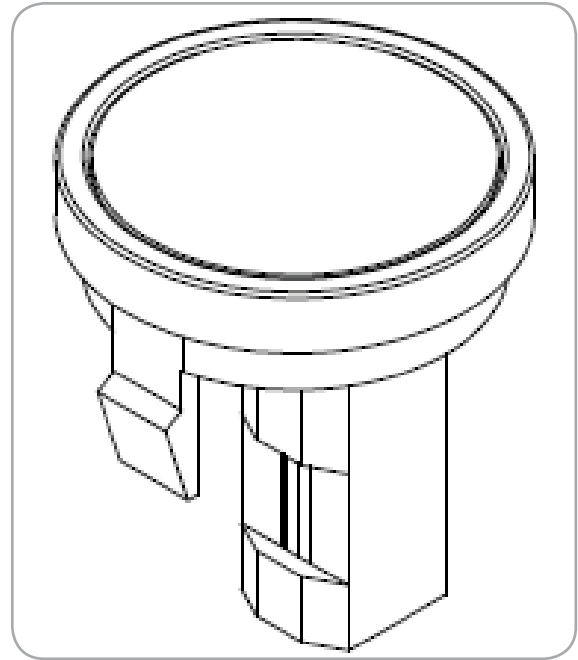




T H E R M O M E T R I C S  
A C O M M I T M E N T T O E X C E L L E N C E

# Single Solar Sensor



The single solar sensor is mounted on the IP panel near the front window. It has one photo diode cell inside and is used in the independent type automatic temperature control (ATC) by sensing the amount of light left and right, using angle light activating filters. The sensor uses the amount of outside sunlight coming into the vehicle to help control the vehicle's HVAC system.

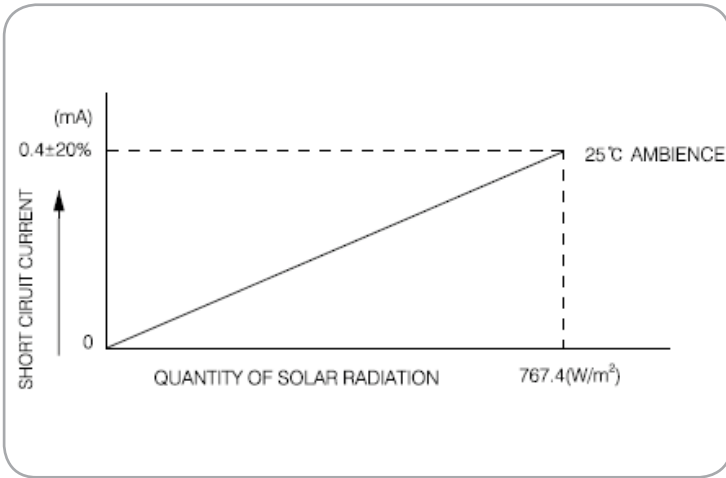
## Applications

- Air-conditioner HVAC system for automobiles

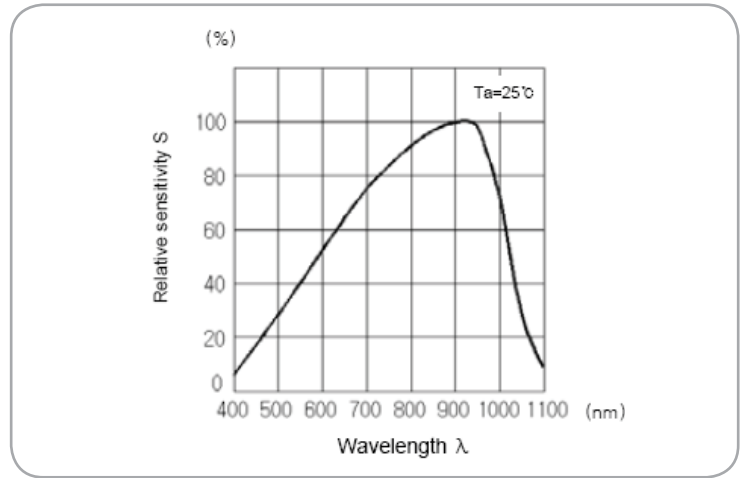
## Features

- Fast response time
- Easy to install
- Linear response with sun light intensity
- Higher current output

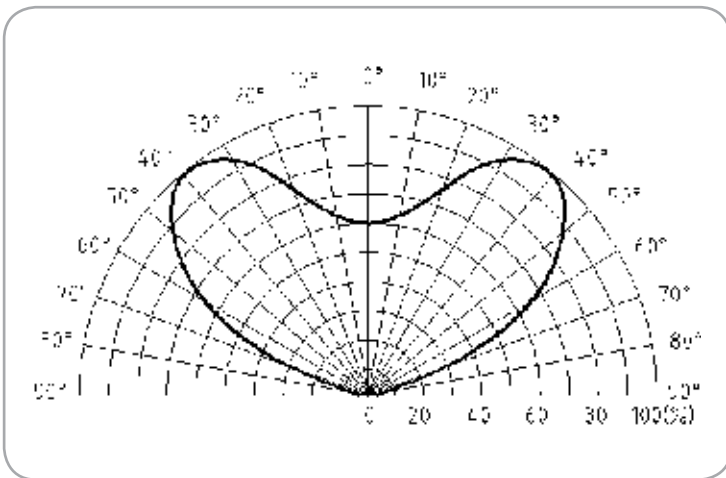
**Amphenol**  
**Advanced Sensors**



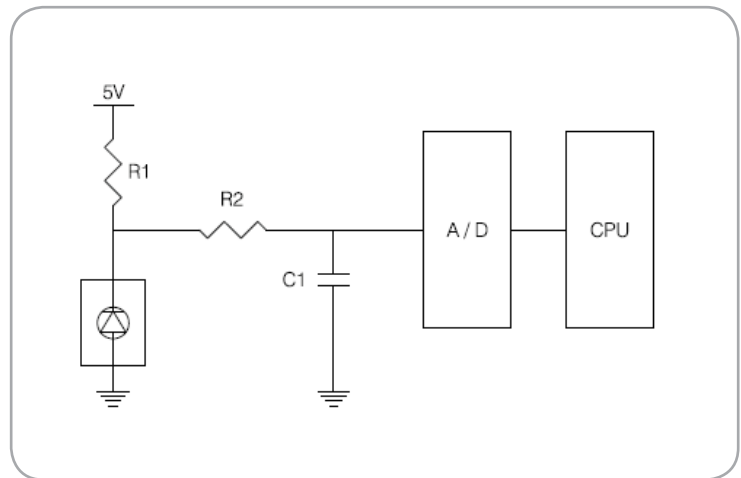
Current Output Vs. Light Level



Relative Spectral Sensitivity Vs. Wavelength



Relative Solar Output



Application Schematic

## Specifications

### Operating Temperature Range

-30°C to 80°C

### Storage Temperature Range

-40°C to 85°C

### Output Current

$0.4 \text{ mA} \pm 20\%$  at  $\text{Phi}=0^\circ$ ,  $\text{Theta}=45^\circ$   
 (2856K Standard A light source,  $767.4 \text{ W/m}^2$  or  $17359 \text{ LUX}$ )

# Drawings

